

1

2

3

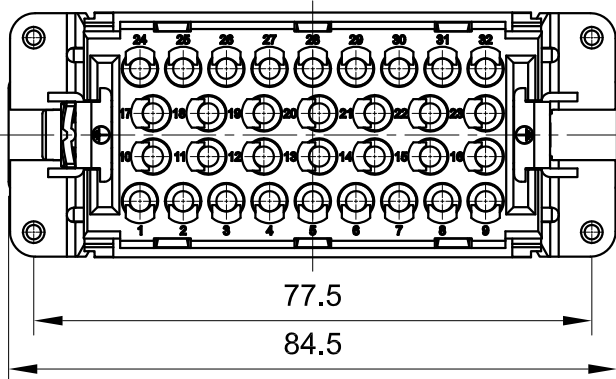
4

5

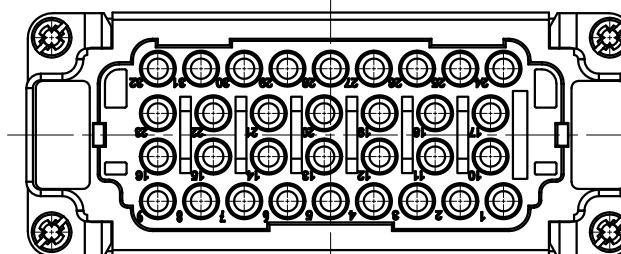
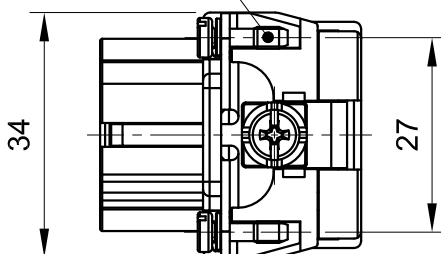
6

A

A

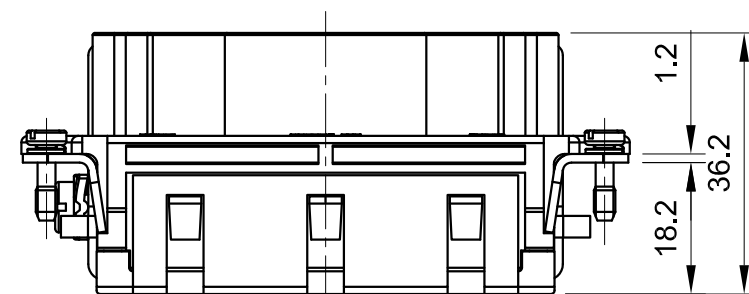


M3x10



B

B



Panel cut out  
面板开孔尺寸

C

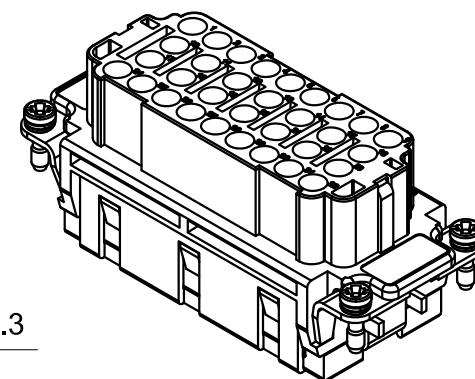
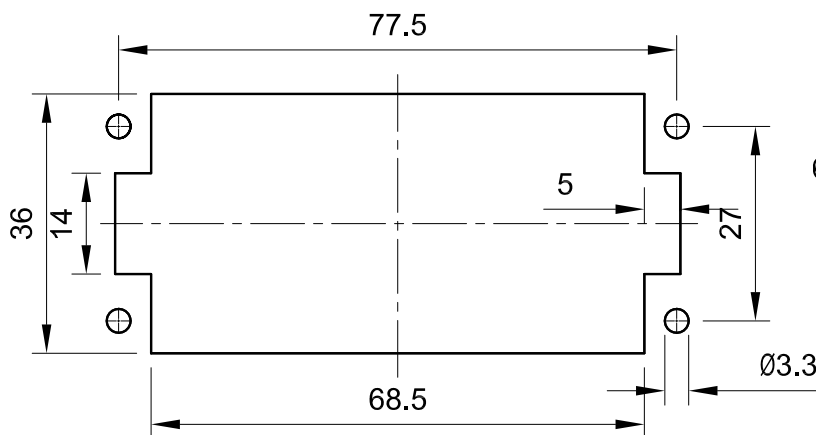
C

Technical data:

- No. of contact: 32
- Termination method: Crimp termination
- Gender: Female
- Size: B16
- Conductor cross-section: 0.14 ... 4 mm<sup>2</sup>
- Rated current: 16A
- Rated voltage: 500V
- Rated impulse voltage: 6kV
- Pollution degree: 3
- Rated voltage acc.to UL: 600V
- Insulation resistance:  $\geq 10^4 \Omega$
- Limiting temperature: -40 ... +125°C
- Material(insert): Polycarbonate
- Color(insert): RAL 7032(pebble grey)
- Mating cycles:  $\geq 500$
- Material flammability class acc. to UL94: V-0
- RoHS: Compliant
- Specifications: IEC61984, EN60664-1



技术数据:

- 针数: 32
- 接线方式: 冷压接针
- 公母类型: 母头
- 尺寸: B16
- 导体截面积: 0.14 ... 4 mm<sup>2</sup>
- 额定电流: 16A
- 额定电压: 500V
- 额定脉冲电压: 6kV
- 污染等级: 3
- 额定电压符合UL: 600V
- 绝缘阻抗:  $\geq 10^4 \Omega$
- 极限温度: -40 ... +125°C
- 材料(插芯): 聚碳酸酯
- 颜色(插芯): RAL 7032 (卵石灰)
- 插拔次数:  $\geq 500$
- 材料阻燃性等级符合UL94: V-0
- RoHS: 符合豁免标准
- 规格: IEC61984, EN60664-1



D

D

|  |  |                            |                           |                        |              |
|--|--|----------------------------|---------------------------|------------------------|--------------|
|  <b>InKonn</b> <sup>®</sup><br>InKonn (Suzhou) Electric Technology Co.,Ltd. |  All Dimensions in mm<br>Original Size DIN A4 | Date<br>2019-12-15         | Drawing No.<br>TC9696895  | Rev.<br>A00            | Scale<br>1:1 |
|  | Type Name<br>IEE-032-CF  | Part No.<br>10 32 032 2200 | Created by<br>Shuxu Huang | Checked by<br>Yiyi Luo | Page<br>1/1  |

1

2

3

4

5

6